

**PLEASE READ THIS MANUAL CAREFULLY BEFORE SERVICING**

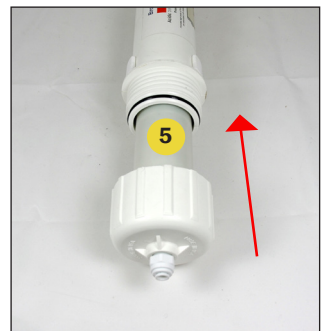
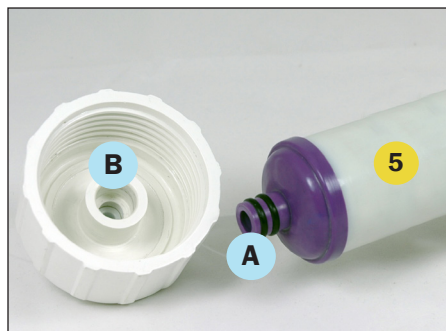


**IMPORTANT:** Turn off the the water supply before beginning to service the filter.

- 1 Disconnect the tubing **1** (see **Diagram 1** overleaf for John Guest Instructions).

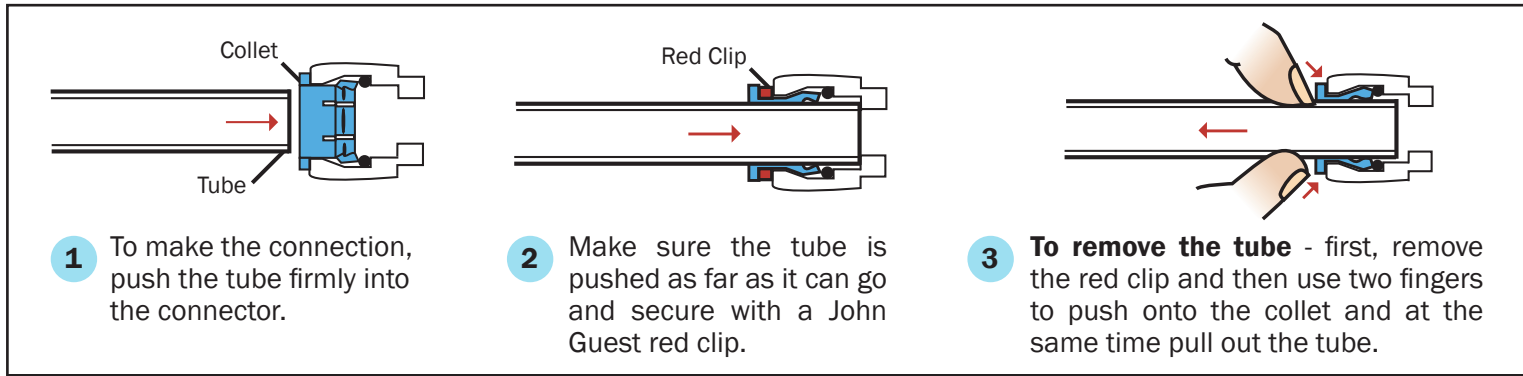
**NOTE:** The housing will contain water, it is recommended to have a towel and/or small bucket at hand.

- 2 Unscrew and remove the housing cap **2** using the spanner **3** provided, turning in an anti-clockwise direction.
- 3 Remove the used Alkalising Filter Cartridge **4** from the housing and dispose of responsibly.
- 4 **Installing Your New Cartridge 5** : Insert the double O-Ringed end **A** into the housing cap **B** .
- 5 Insert into the housing. Screw on the housing cap using the spanner provided - do not overtighten, check for leaks.



# Replacing your Alkalisising Filter Cartridge

Diagram 1 - Tube Connections



To better serve you, The Water Shop records your maintenance details in our customer data base. We offer a complimentary reminder service to make you aware of when your filter and/or cartridges require maintenance.

Please call The Water Shop directly on (02) 9458 1111 for further assistance and information.